

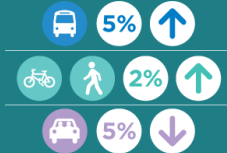
# Connecting Your Campus > UCD

## Commuting Strategy in UCD

Since 2011, University College Dublin, the National Transport Authority and Dún Laoghaire Rathdown County Council have been working together on the UCD Commuting Strategy Implementation Group.

The group meets on a quarterly basis to discuss transport and planning issues, focussed on the campus and its environs. The primary objective of the group is to review the implementation of UCD's Commuting Strategy.

### Student Travel Choices 2011 - 2014



**29,000**  
Students and staff commute to UCD

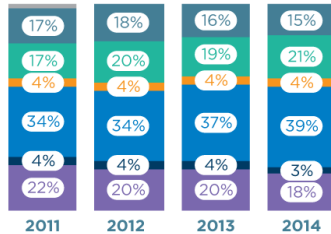
**79%**  
of UCD students in 2014 walk, cycle or use public transport

**51%**  
of UCD staff walk, cycle or use public transport

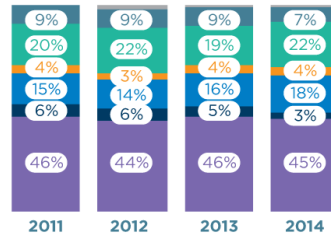
Source: UCD Annual Commuting Surveys 2011-2014

## Transport Modes Trends

### Student Transport Modes



### Staff Transport Modes



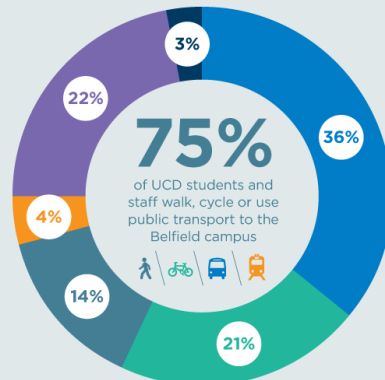
Travelling by bus is the most popular transport mode for **UCD students**

Between 2004 and 2014, the car mode share for **UCD staff** has declined from 66% to 48%

Source: UCD Annual Commuting Surveys 2011-2014

## Overall Transport Modes Usage 2014

- 14% UCD students and staff commute by **walking**
- 21% UCD students and staff commute by **cycling**
- 36% UCD students and staff commute by **bus**
- 4% UCD students and staff commute by **rail**
- 22% UCD students and staff commute by **car**
- 3% UCD student and staff commute as a **car passenger**



Source: UCD Annual Commuting Survey 2014.